



# UBUNTU SIXPACK

When your system starts, you'll see a boot menu (Figure 1). Select *Try Ubuntu without any change to your computer* and press Enter to confirm. The Ubuntu desktop will appear on your screen.

## Virtual Machines

In the top left-hand corner of the Ubuntu desktop, you will see an additional *Innotek VirtualBox* icon that is not part of the standard desktop. Despite the padlock icon, you can still access the underlying software.

To launch the VirtualBox virtual machine, press the icon. Double-clicking the icon launches the program. The first thing you see is the Control Center,

where you can manage individual virtual machines. The lower part of the window contains a list of pre-configured systems, including entries for *Kubuntu 8.04 KDE 4*, *Mythbuntu 8.04*, and *Xubuntu 8.04*. As the version number indicates, all three systems are based on packages for the latest version of Ubuntu.

To try one of the Ubuntu derivatives in a virtual machine, select an entry in the list and click *Start*. Ctrl + right arrow returns the host system to the foreground; however, the virtual machine keeps running. To return to a virtual machine, just click on the window.

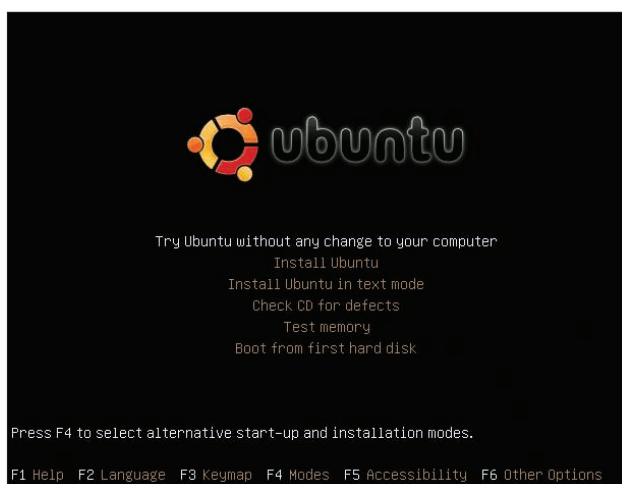
The arrival of Ubuntu 8.04 "Hardy Heron" signaled a new era for the whole family of distributions that use Ubuntu as a base. Kubuntu, Edubuntu, Mythbuntu, and other Ubuntu derivatives soon followed with new releases of their own projects.

## Sixpack

Rather than confining you to a single Ubuntu option, this month's *Linux Magazine DVD* offers several Ubuntu alternatives on a single disc. To browse for your favorite \*buntu, simply insert this disc into your DVD drive and then reboot your computer.

## Booting

If your system does not boot to the DVD, try changing the boot order in the BIOS configuration menu.



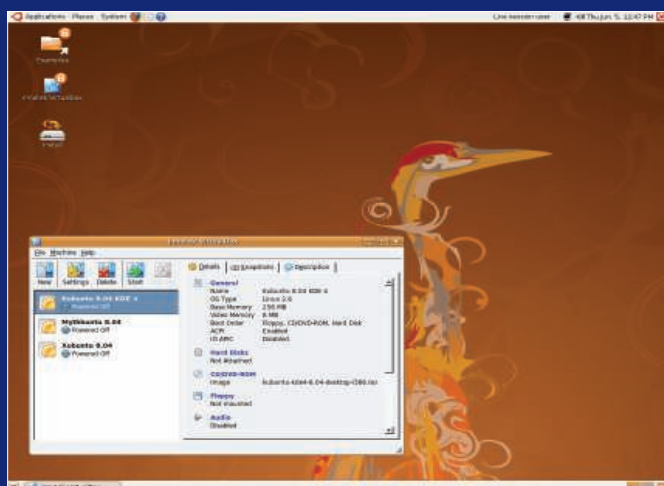
**Figure 1: To start Ubuntu from the DVD, select "Try Ubuntu without any change to your computer."**

## What's Inside

This DVD provides the following Ubuntu alternatives:

- Ubuntu – The original Gnome-based distribution.
- Kubuntu – A version of Ubuntu that uses KDE.
- Xubuntu – A light Ubuntu derivative that uses the Xfce desktop.
- Mythbuntu – A version designed to support MythTV.
- Edubuntu – Ubuntu add-on for educational settings.
- Ubuntu Studio – Ubuntu for the audio, visual, and graphics specialist.

Edubuntu and Ubuntu Studio are add-on packages that do not appear in the boot menu but are still available on the DVD.



**Figure 2: Launch Kubuntu, Mythbuntu, or Xubuntu from a virtual environment on the Ubuntu base system.**



**Figure 3: The user-friendly Kubuntu brings the benefits of Ubuntu to KDE users.**



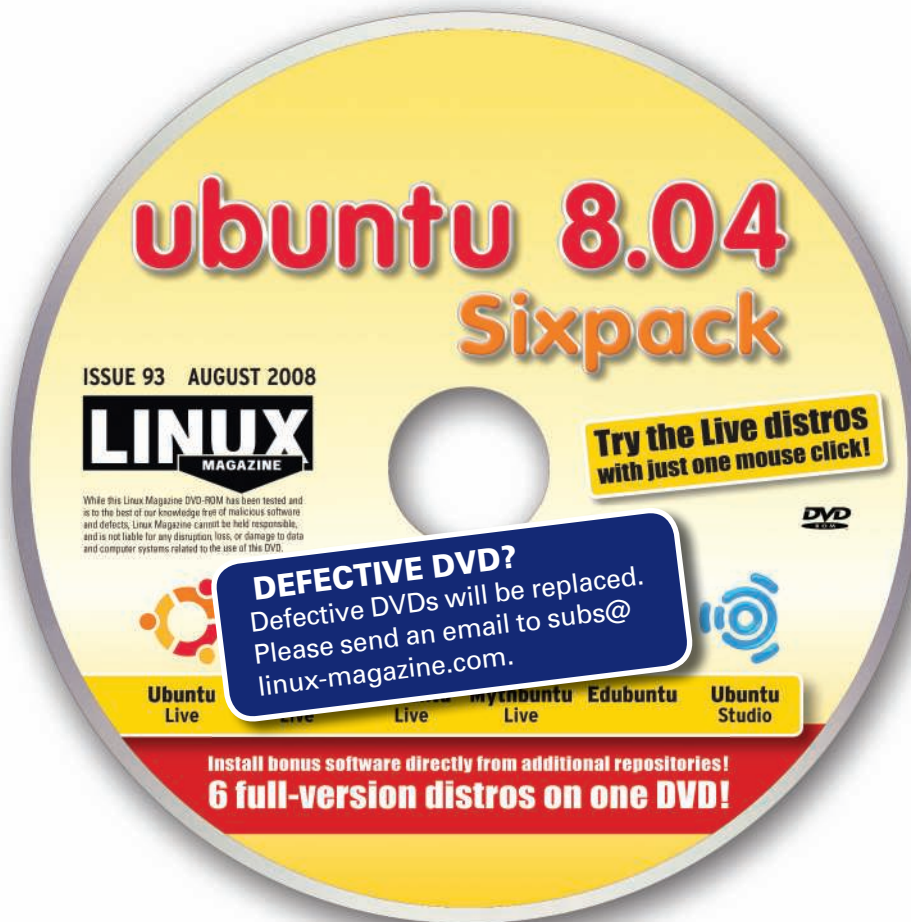
## System Requirements

For Ubuntu, Kubuntu, and other standard versions, the Ubuntu project recommends 384MB RAM, 8GB of disk space, and a graphics card capable of 1024 x 768 resolution.

Xubuntu, which is designed to operate with minimal hardware, requires only 128MB RAM to run from the CD and 192MB minimum to install. Mythbuntu and Ubuntu Studio are tailored for multimedia applications and have additional hardware requirements [4] [6].

## ADDITIONAL RESOURCES

- [1] Ubuntu: <http://www.ubuntu.com>
- [2] Kubuntu: <http://www.kubuntu.org/>
- [3] Xubuntu: <http://www.xubuntu.org/>
- [4] Mythbuntu: <http://www.mythbuntu.org/>
- [5] Edubuntu: <http://www.edubuntu.org/>
- [6] Ubuntu Studio: <http://ubuntustudio.org/>
- [7] VirtualBox: <http://www.virtualbox.org/>



## Try It

Our Ubuntu Sampler DVD lets you try all the leading Ubuntu alternatives in an easy virtual environment. If you decide on a favorite, you can install it directly

to your hard disk. The Ubuntu repositories offer access to hundreds of other powerful Linux applications.

We hope you enjoy this month's Ubuntu Sixpack DVD. ■



Figure 4: The Mythbuntu community supported add-on is designed to support MythTV.

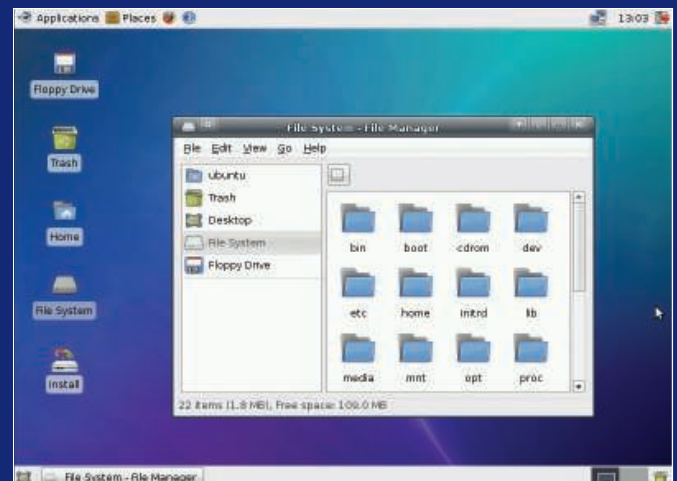


Figure 5: Keep your older systems alive with the light and lively Xubuntu.