

# UBUNTU 7.10

The Ubuntu project continues its conquest of the Linux desktop with Ubuntu 7.10 “Gutsy Gibbon.” Gutsy comes with new installation options, better security, improved 3D effects, and write support for Windows NTFS partitions. Ubuntu Linux is respected around the world for combining high-end stability with an easy user experience. We are proud to bring you Ubuntu 7.10 “Gutsy Gibbon” as this month’s *Linux Magazine* DVD.

## The Desktop

The Gnome 2.20 desktop included with Ubuntu 7.10 comes with an array of improvements, including an enhanced Evolution mail and calendar client, advanced power management, and

### System Requirements

<b>Processor:</b>	Runs on most Intel x86-based PCs, such as Intel Pentium and AMD Athlon
<b>Memory:</b>	384MB Minimum
<b>Free Disk Space:</b>	2GB Minimum

better browsing for digital images. The desktop search bar applet, which is now part of the Ubuntu default configuration, provides fast access to common search functions.

Gutsy Gibbon also includes default Compiz Fusion 3D graphics and a new tool for quickly switching between user sessions. The Firefox browser adds an improved Firefox plugin finder, and new background tools provide dynamic screen configuration.

## Security Matters

The AppArmor security framework makes its way into the default Ubuntu configuration with the latest release. AppArmor provides tighter security by letting the user limit an application’s access to the system.

An additional installation alternative now offers an option for securing files with hard disk encryption. This disk-level encryption, which protects data even when the system is in a powered-off state, ensures that a stolen laptop or mobile device won’t reveal your secrets.

## For the Admin

Although Ubuntu is popular with the home crowd, the system also shines as an easily manageable workstation for corporate networking environments.

Gutsy Gibbon comes with features such as profile-based authentication

configuration, which lets the administrator set up profiles for site-wide authentication changes.

## Write Access

One of the most important changes with Ubuntu 7.10 is the default support for write access to Windows NTFS partitions. Earlier versions of Ubuntu offered read access, but the latest version comes with NTFS write support using the tools of the NTFS-3g project. Other advances include improved LTSP thin client support through compressed images, as well as new pre-configured server installation options.

## Plug In the Printer

Gutsy Gibbon offers new automatic printer installation. According to the Ubuntu developers, you just need to plug the printer in and turn it on. Gutsy Gibbon also comes with better tools for handling non-free device drivers.

## Conclusion

The Ubuntu project is famous for a smart, simple user interface and a no-nonsense approach to development and integration. The latest Ubuntu comes with Gnome 2.20, the AppArmor security framework, and many new features for a smoother desktop experience.

We hope you enjoy this month’s Ubuntu 7.10 “Gutsy Gibbon” DVD. ■

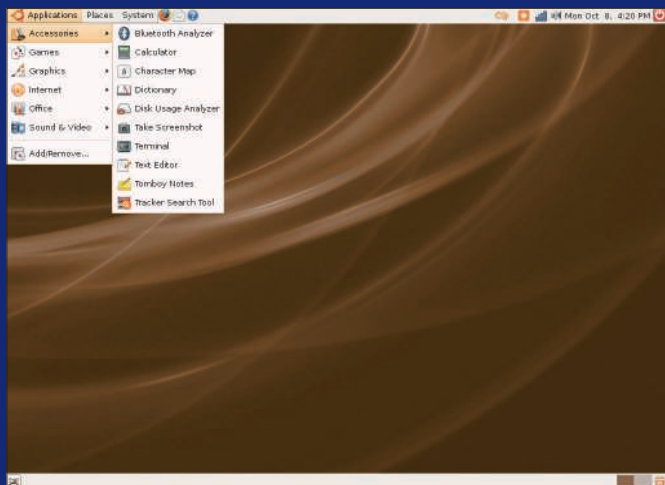
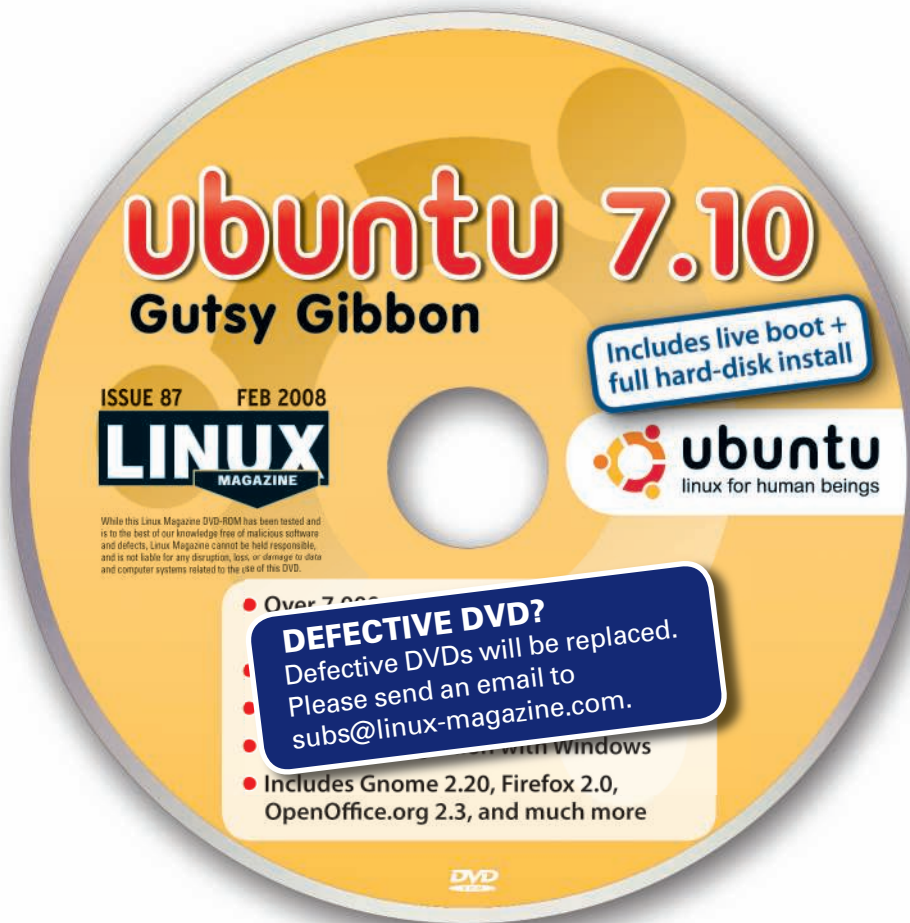


Figure 1: Find the right application quickly with Ubuntu’s efficient user interface.



Figure 2: Search images and documents with the convenient Tracker search tool.



**HIGHLIGHTS**

- Linux kernel 2.6.22
- X.org X11 7.2
- Gnome 2.20
- Evolution 2.12
- Firefox 2.0
- Thunderbird 2.0
- GIMP 2.4.0
- OpenOffice 2.3
- AbiWord 2.4.6
- Rhythmbox 0.11
- Avahi 0.6.20
- Gstreamer 0.10
- F-Spot 0.4.0
- Ekiga 2.0.11
- Apache 2.2.4
- Samba 3.0.26
- MySQL 5.0
- PostgreSQL 8.2

**ADDITIONAL RESOURCES**

- [1] Ubuntu Linux: <http://www.ubuntu.com/>
- [2] Ubuntu Forums: <http://ubuntuforums.org/>
- [3] Ubuntu Wiki: <https://wiki.ubuntu.com/>
- [4] Kubuntu – Ubuntu KDE derivate: <http://www.kubuntu.org/>
- [5] Edubuntu – Ubuntu derivate for schools: <http://www.edubuntu.org/>

**HELP & SUPPORT**

For a summary of Ubuntu documentation and community support, see <http://www.ubuntu.com/support>. For information on paid professional support services, see <http://www.ubuntu.com/support/paid>. Additional documentation is available at <https://help.ubuntu.com/>.

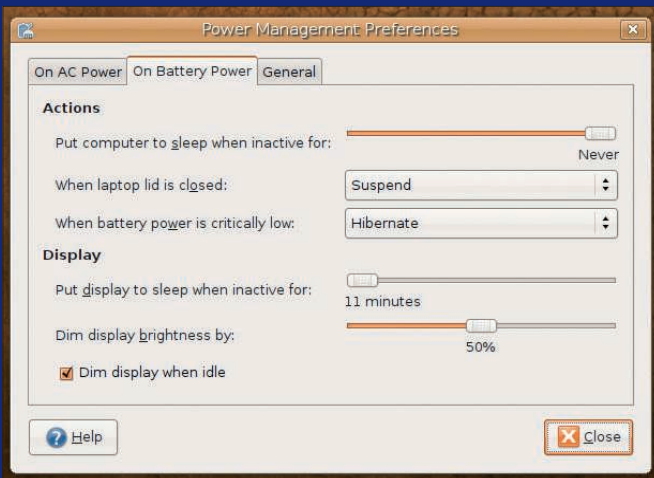


Figure 3: Gutsy Gibbon also comes with improved power-management features.

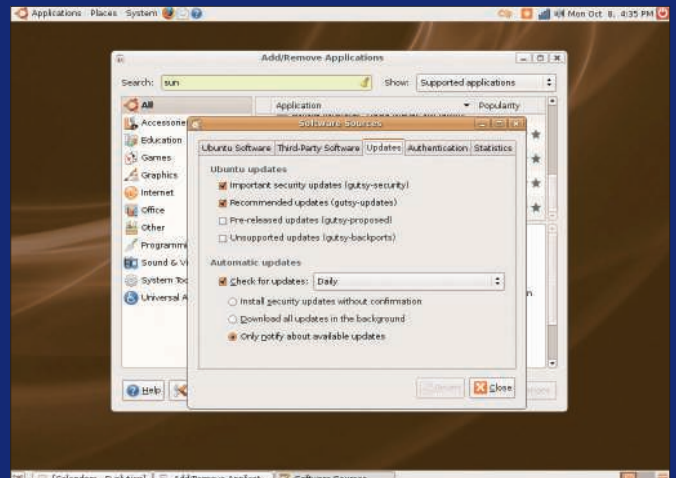


Figure 4: Keep your system current with the powerful Ubuntu update system.